



# SUNRISE BAY

RESIDENCES



## HOUSE MI-07-A

-  2
-  2
-  1
-  75 m<sup>2</sup>
-  323 m<sup>2</sup>

Useful area

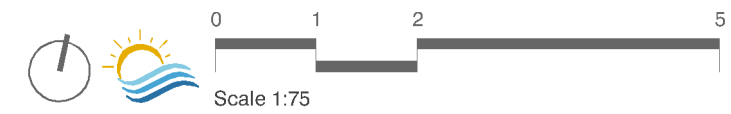
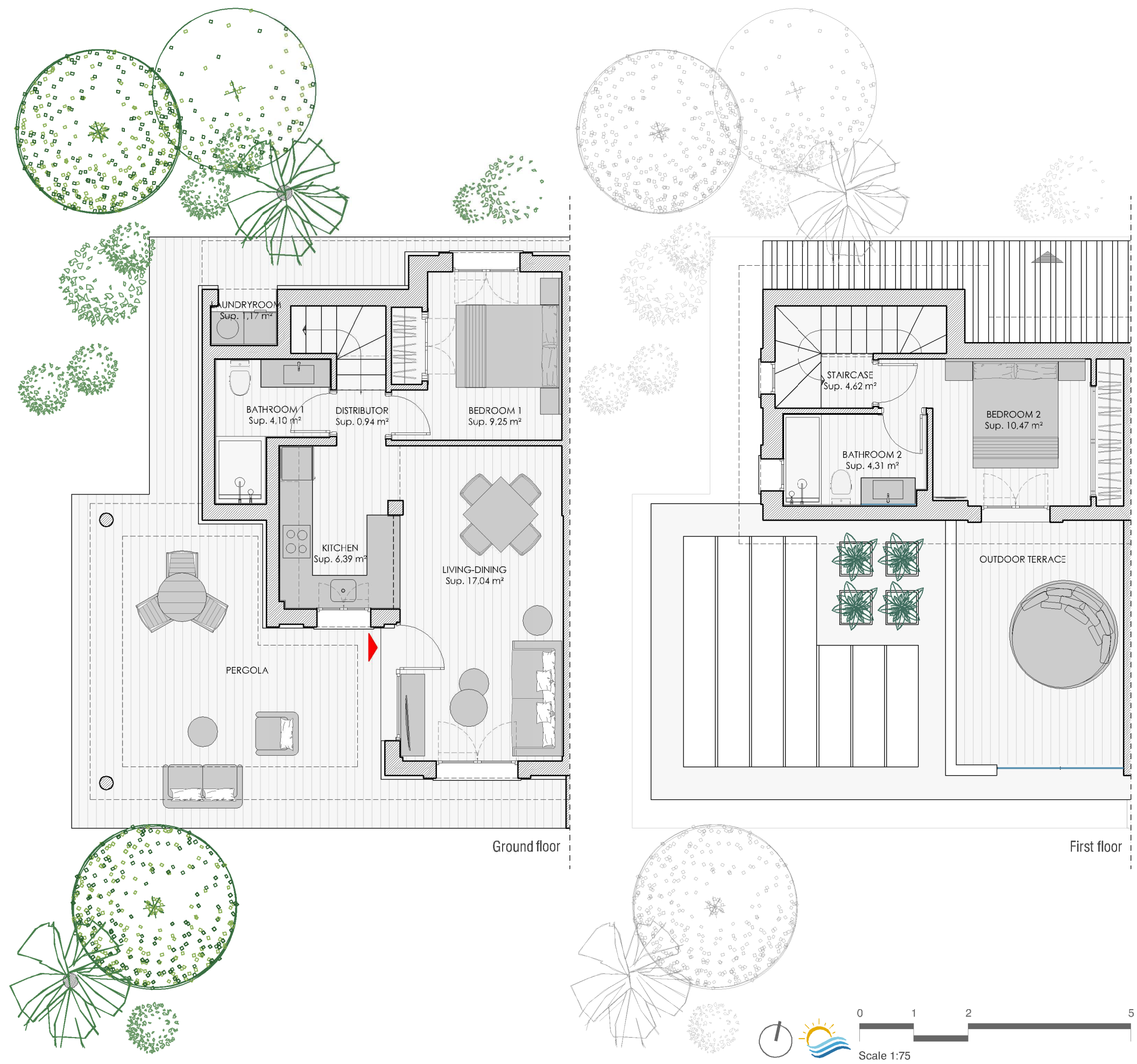
Living-dining	17,04 m <sup>2</sup>
Kitchen	6,39 m <sup>2</sup>
Distributor	0,94 m <sup>2</sup>
Bedroom 1	9,25 m <sup>2</sup>
Bathroom 1	4,10 m <sup>2</sup>
Laundryroom	1,17 m <sup>2</sup>
Staircase	4,62 m <sup>2</sup>
Bedroom 2	10,47 m <sup>2</sup>
Bathroom 2	4,31 m <sup>2</sup>
<b>Total useful interior area</b>	<b>58,29 m<sup>2</sup></b>

Built area

Closed built area	75,00 m <sup>2</sup>
Terrace built area	13,87 m <sup>2</sup>
Pergola terrace built area	29,69 m <sup>2</sup>
<b>Total built area</b>	<b>118,56 m<sup>2</sup></b>

Garden area

Garden area	229,75 m <sup>2</sup>
<b>Plot area</b>	<b>323,08 m<sup>2</sup></b>



Representative plan of the project is not a contractual document; It may be subject to changes due to technical, legal or administrative requirements and licenses, as well as the construction or design necessities derived from the project development and works/construction management. All decorative and furniture elements are merely indicative.