

Exterior carpentry



Minimal aluminium exterior carpentry - Double glazing.

Functional standards are guaranteed by excellent acoustic and thermal insulation performance and perfect resistance to wear and tear caused by weathering.



INTERIOR DOORS

MDF lacquered from floor to ceiling. Colour to be defined.

- Isolation rubber.
- Hidden hinges.

ENTRANCE DOOR

Pivoting security entrance door, with external lining of laminated marine wood.

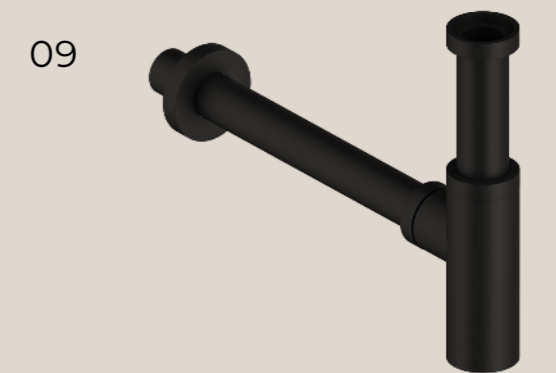
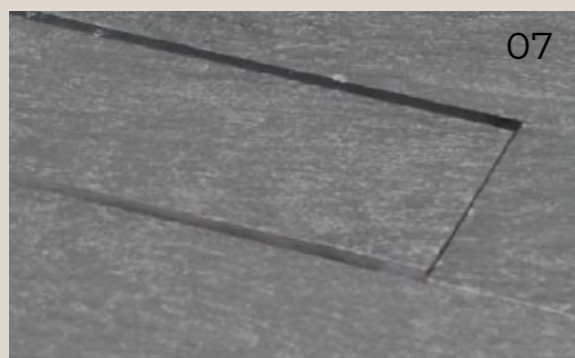
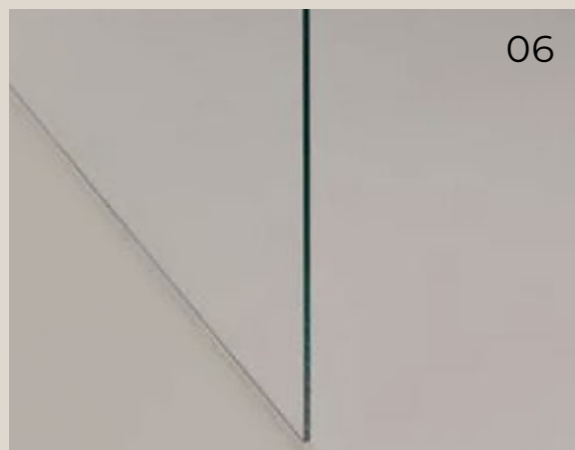
Dimensions 120x280cm. + Fixed glass 30cm wide

Bathrooms material finishes



- 01- Floor C3 (100x100 cm.) & (300x100 cm.) ceramic tiling
- 02- Oak veneer for washbasin furniture and wall panelling.
- 03- Made-to-measure washbasin countertop in porcelain tile.
- 04- Ceiling-mounted washbasin mirror with integrated LED lighting in the side panels.
- 05- Water-repellent paint for walls.

Bathrooms Fittings



01- Floor C3 (100x100 cm.) & wall (300x100 cm.) ceramic tiling. 02- Oak veneered washbasin unit. 03- Made-to-measure washbasin countertop in porcelain tile. 04- Shower spray head. 05- Shower faucets, matt black. 06- Frameless shower enclosures with jandel. 07- Integrated shower grid. 08- Built-in basin taps, matt black. 09- Siphon for washbasin, matt black. 10- WC mixer tap, matt black. 11- Concealed cistern and push button, matt black. 12- Wc, white.

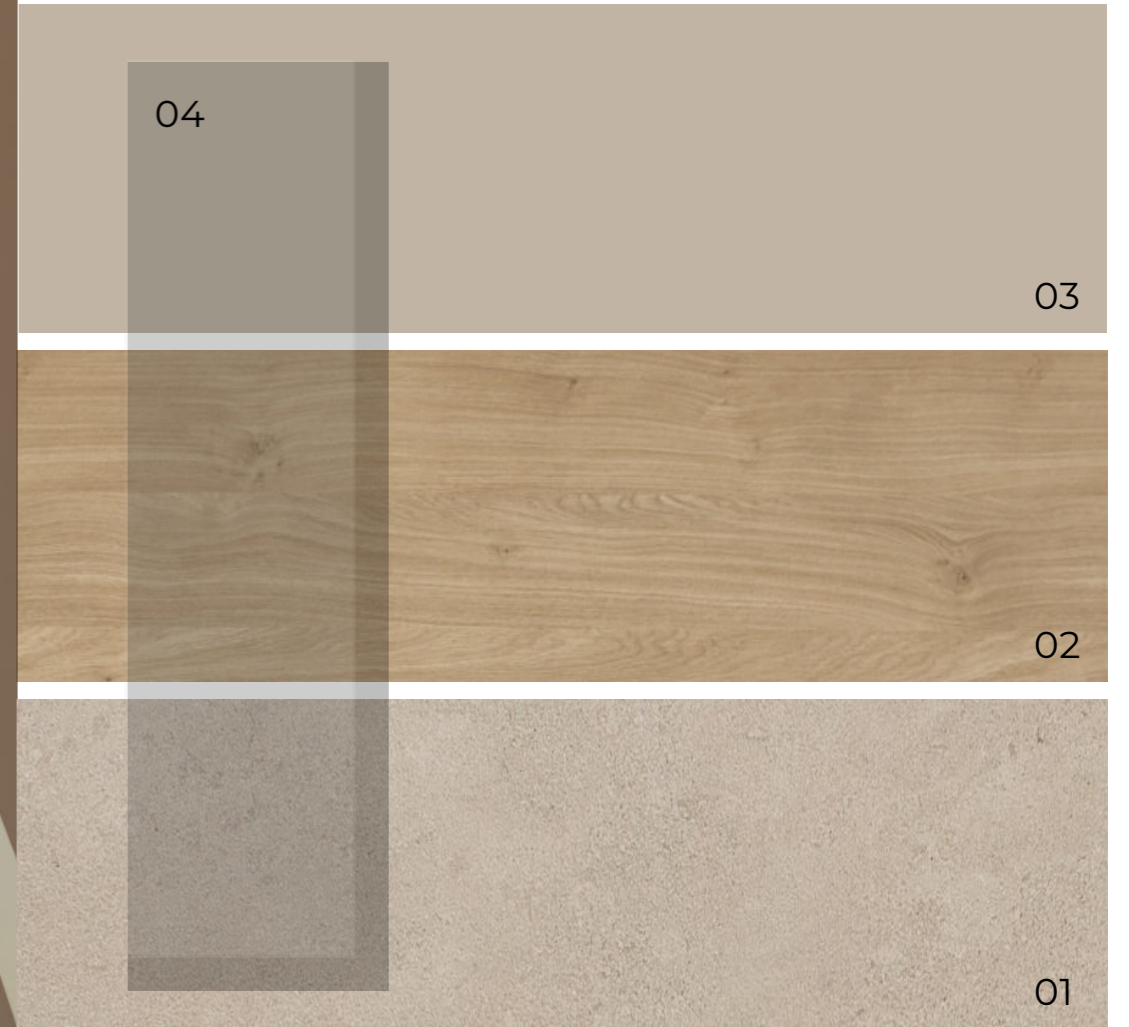
Kitchen



- 01- Floor (100x100 cm.) ceramic tiling.
- 02- Oak veneer for for kitchen island base units and 6 high storage units.
- 03- Made-to-measure ceramic countertop for kitchen island.
- 04- Paint for walls.



Stairs



01- Floor (100x100 cm.) ceramic tiling.

02- Oak veneer Staircase from ground floor to first floor:
Metallic structure with steps covered in wood veneer - darkened oak.
Remaining staircase flights made of concrete and finished with the same ceramic material as used for the floor.

03- Paint for walls

04- Floor to ceiling glass railings.



Technical Equipment

- 1- PHOTOVOLTAIC SOLAR PANEL INSTALLATION.
- 2- DUCTED AIR-CONDITIONING SYSTEM.
- 3- UNDERFLOOR HEATING AND DOMESTIC HOT WATER VIA ELECTRIC HEAT PUMP (AEROTHERMIA).
- 4- AIR-TO-AIR HEAT EXCHANGE VENTILATION SYSTEM.
- 5- CONNECTED TO THE PUBLIC SEWAGE NETWORK.
- 6- WATER SOFTENER FOR DOMESTIC USE.