

- 01- C3 Non-slip ceramic floor tiling (90 x 90 cm.)
- 02- Façade finish: white lime mortar
- 03- Swimmingpool mosaic tile
- 04- Wooden pergolas

Exterior carpentry



Minimal aluminium exterior carpentry - Double glazing.

Functional standards are guaranteed by excellent acoustic and thermal insulation performance and perfect resistance to wear and tear caused by weathering.



INTERIOR DOORS

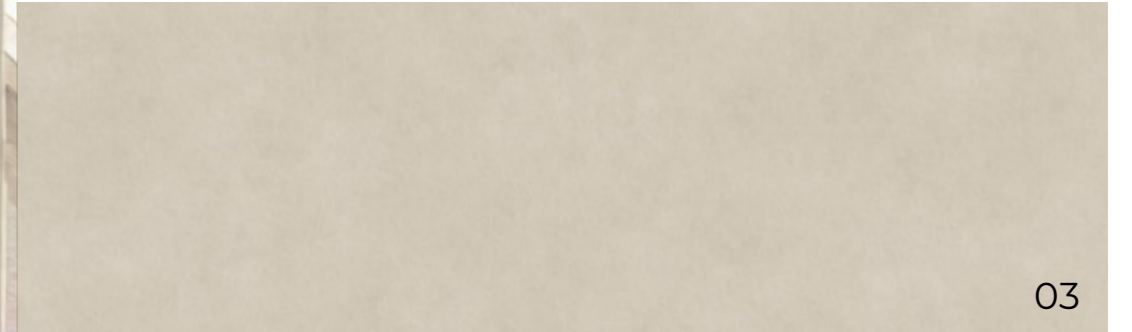
MDF lacquered from floor to ceiling. Colour to be defined.

- Isolation rubber.
- Hidden hinges.

ENTRANCE DOOR

Aluminium security entrance door in corten colour finish.

Bathrooms material finishes



03



02



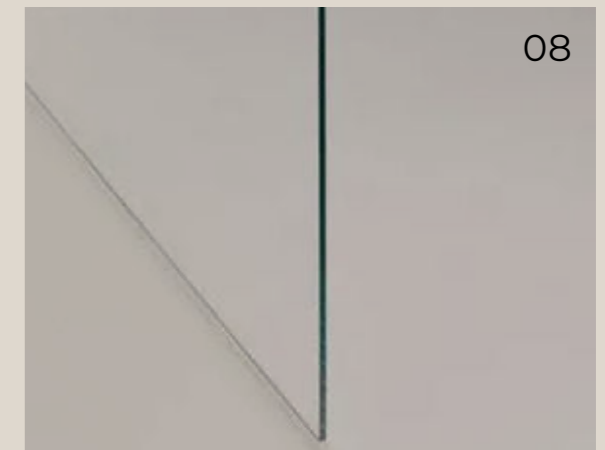
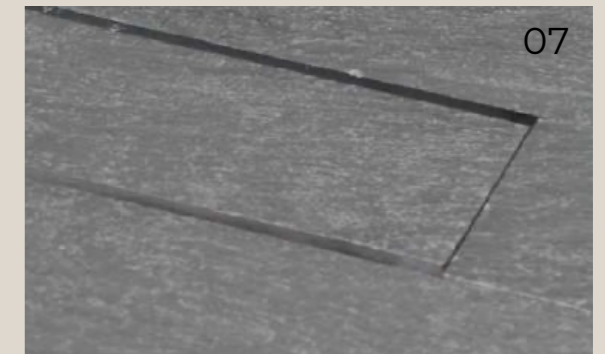
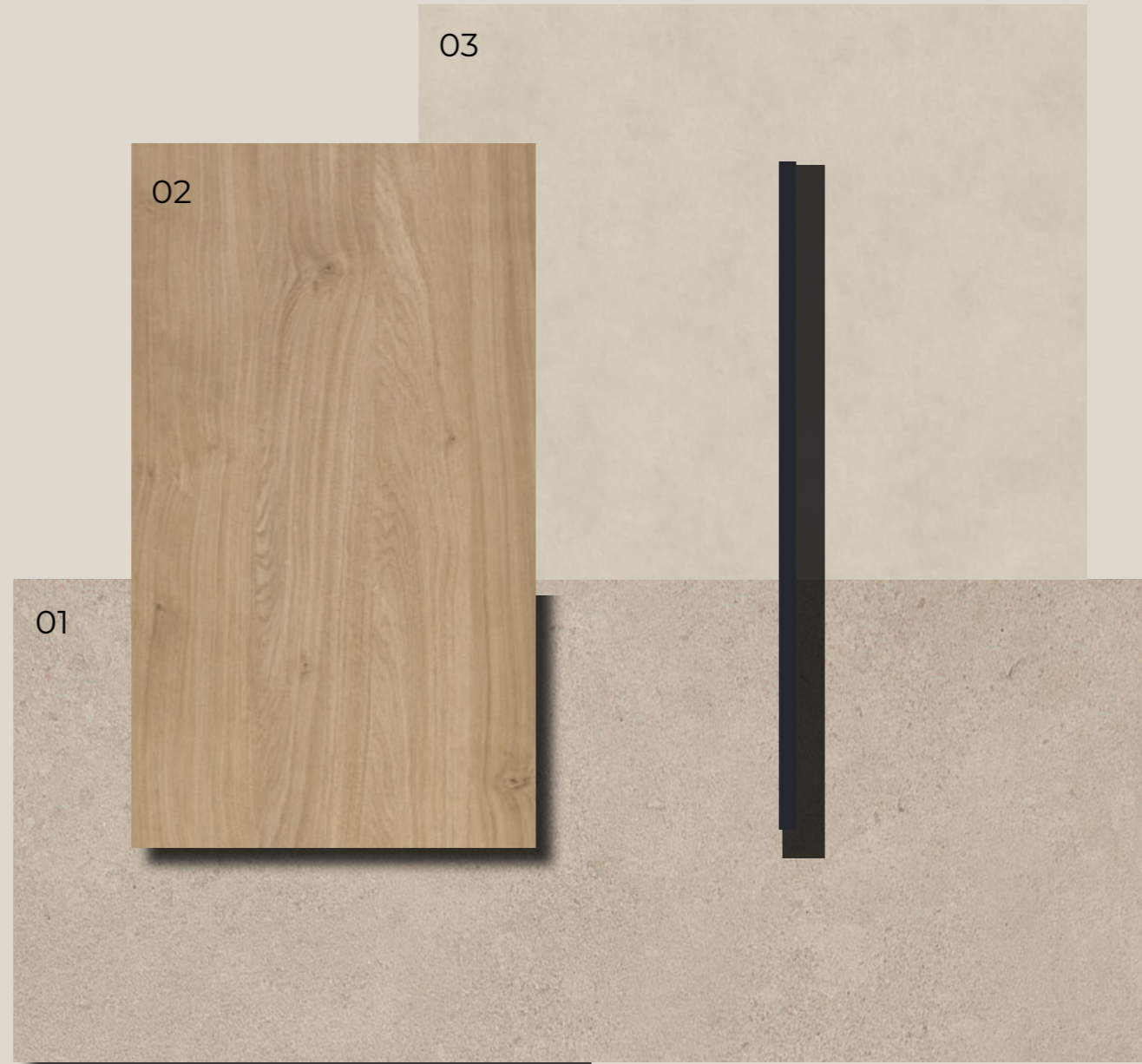
01

01- Flooring & wall ceramic tiling (90x90 cm.)

02- Oak veneer for washbasin furniture.

03- Made-to-measure washbasin countertop in porcelain tile.

Bathrooms Fittings



01- C3 flooring & wall ceramic tiling (90x90 cm.). 02- Oak veneered washbasin unit. 03- Made-to-measure washbasin countertop in porcelain tile. 04- Shower spray head. 05- Shower faucets, matt black. 06- Built-in basin taps, matt black. 07- Integrated shower grid. 08- Frameless shower enclosures with jandel. 09- Wc, white.

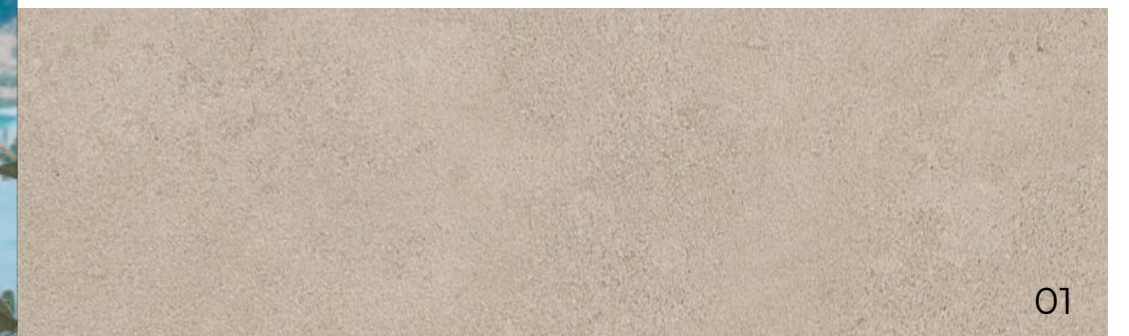
Kitchen



03



02



01

- 01- Floor (90 x 90 cm.) ceramic tiling.
- 02- Oak veneer for for kitchen island base units and, storage units.
- 03- Made-to-measure ceramic countertop for kitchen island (12 mm. thickness)
- 04- Paint for walls.

Technical Equipment

1- DUCTED AIR-CONDITIONING SYSTEM.

2- UNDERFLOOR HEATING AND DOMESTIC HOT WATER VIA ELECTRIC HEAT PUMP (AEROTHERMIA).

3- AIR-TO-AIR HEAT EXCHANGE VENTILATION SYSTEM.

DREIER

NEW HOUSE

*The images and information shown in this dossier are merely representative and not binding.
Construcciones y Mantenimiento Dreier S.L. keeps its right to make the appropriate modifications or adjustments in order to adequately carry out this project.

www.dreiersl.com

